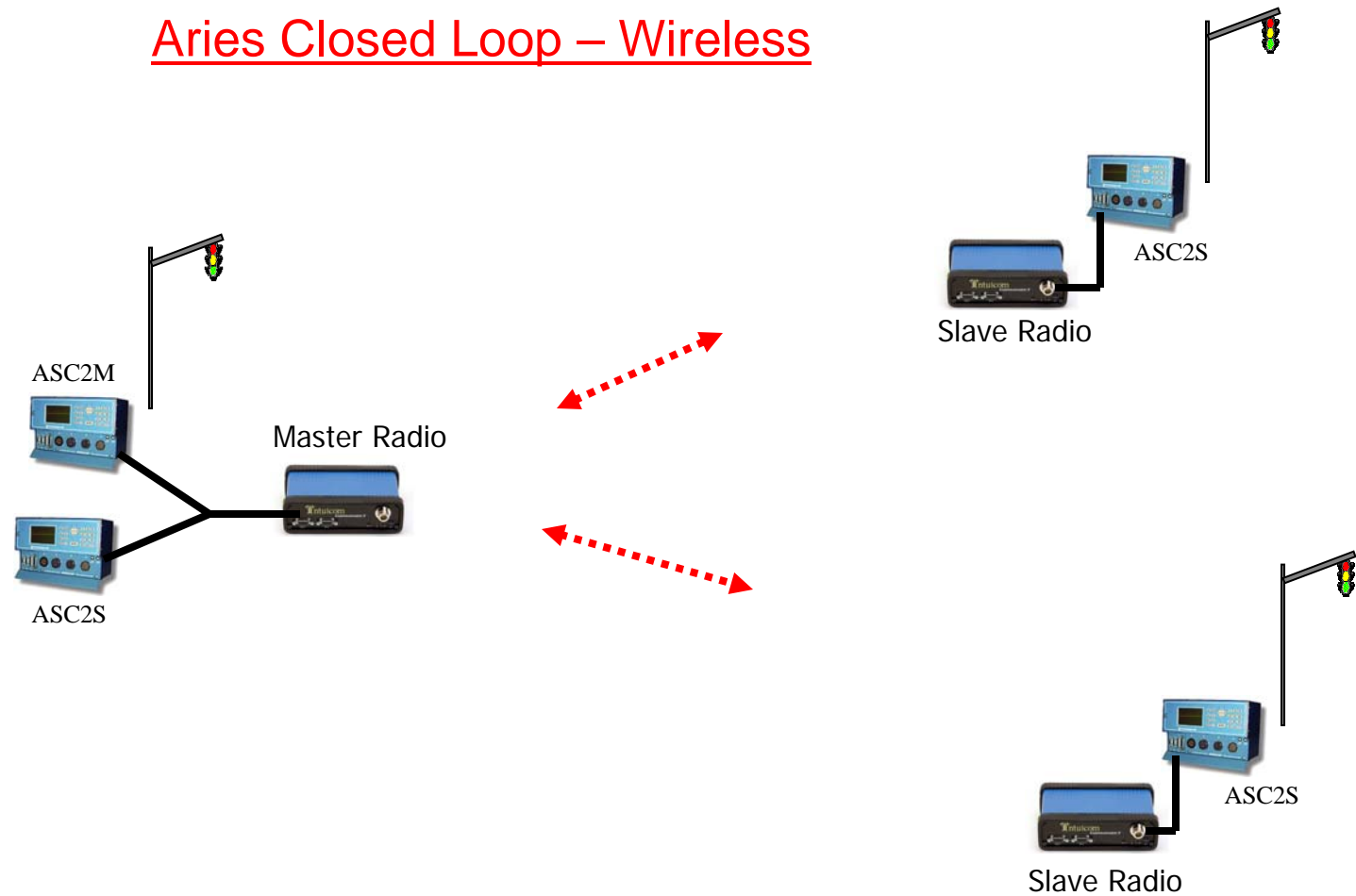


Application Note #15

Aries Closed Loop – Wireless



Notes

CH1 - ASC2M, co-located ASC2S and a Master Intuicom Radio

Application Note #15

Telemetry Settings for Intuicom Radios

ASC2/M

Telemetry Data Rate = 19.2Kbps

Telemetry Data Framing = 8N1

Telemetry Commands/Sec = 37

Telemetry Command Time = 497

Telemetry Window = 80

Telemetry Buffer Level = 2

*SW#1 on RS232 Telemetry Board
is to the ASC-8 position*

Co-located ASC2/S

Telemetry Data Rate = 19.2Kbps

Telemetry Data Framing = 8N1

Telemetry Response Delay = 15,000

Software Version must be 1.56 or higher

Write Protect Address 0B4 = 00

Write Protect Address 0BC = 00

Wireless ASC2/S

Telemetry Data Rate = 38.4Kbps

Telemetry Data Framing = 8N1

Telemetry Response Delay = 1

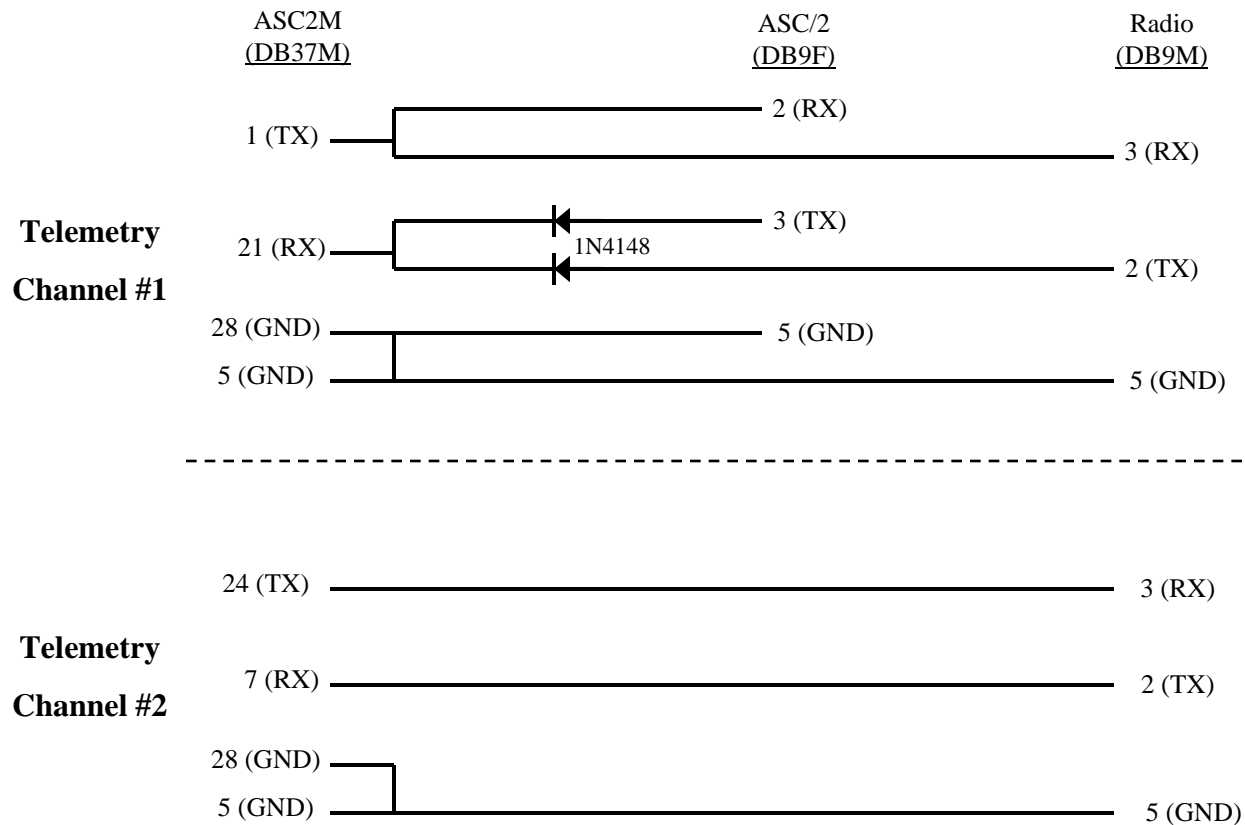
Software Version must be 1.56 or higher

Write Protect Address 0B4 = 01

Write Protect Address 0BC = 01

Application Note #15

RS232 Cable (Master Cabinet Pin-out)



Notes

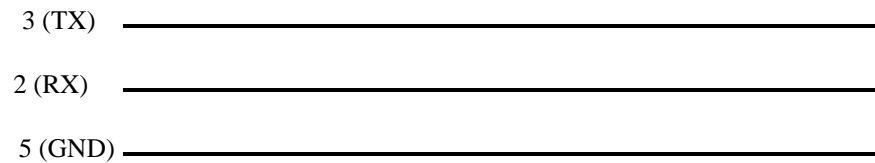
CH1 - ASC2M, co-located ASC2S and a Master Intuicom Radio

CH2 - ASC2M and a Master Intuicom Radio (only)

Application Note #15

RS232 Cable (Local Cabinet Pin-out)

ASC2S
(DB9F)



Radio
(DB9M)